

EDC/TACOA PROJECT LM 2500 SIMPLE CYCLE PROJECT PROJECT EXECUTIVE SCHEDULE																																						
ID	Task Name	Duration	Start	Finish	% Complete	09					Aug 16, '09					Aug 23, '09					Aug 30, '09					Sep 6, '09					Sep 13, '09					Sep 20, '09		
						T	W	T	F	S	S	M	T	W	T	F	S	S	M	T	W	T	F	S	S	M	T	W	T	F	S	S	M	T	W	T	F	S
1	EDC / TACOA Project - 2 Unit LM2500 Site	184 days	Tue 8/11/09	Fri 2/26/10	8%																																	
2	Initial Date	1 day	Mon 10/5/09	Mon 10/5/09	0%																																	
3	Milestone Dates (Key Dates)	50 days	Mon 8/24/09	Mon 10/12/09	29%																																	
4	Initial Date	1 day	Mon 10/5/09	Mon 10/5/09	0%																																	
5	Backfeed Power Available	1 day	Mon 10/12/09	Mon 10/12/09	0%																																	
6	Natural Gas Available	1 day	Mon 10/12/09	Mon 10/12/09	0%																																	
7	Raw Water Available	1 day	Mon 10/12/09	Mon 10/12/09	0%																																	
8	Telephone & Internet Service Available	1 day	Mon 10/12/09	Mon 10/12/09	0%																																	
9	Construction Power Connection Available	1 day	Fri 8/28/09	Fri 8/28/09	100%																																	
10	Construction Permit	1 day	Mon 8/24/09	Mon 8/24/09	100%																																	
11	Payment milestones	129 days	Mon 10/5/09	Fri 2/26/10	0%																																	
12	Project Kickoff	1 day	Mon 10/5/09	Mon 10/5/09	0%																																	
13	Milestone 1 - Civil Works GTG foundation poured	1 day	Mon 11/30/09	Mon 11/30/09	0%																																	
14	MileStone 2 - Gas Turbine set on Foundation	1 day	Thu 12/24/09	Thu 12/24/09	0%																																	
15	Milestone 3 - Gas Turbine Erection complete	1 day	Sat 12/26/09	Sat 12/26/09	0%																																	
16	Milestone 4 - Mechanical Complete	1 day	Fri 2/5/10	Fri 2/5/10	0%																																	
17	Milestone 5 - Electrical Complete	1 day	Fri 2/5/10	Fri 2/5/10	0%																																	
18	Milestone 6 - Precommissioning complete	1 day	Fri 2/5/10	Fri 2/5/10	0%																																	
19	Milestone 7 - Plant commissioning and Testing complete	1 day	Fri 2/26/10	Fri 2/26/10	0%																																	
20	Engineering	99 days	Tue 8/11/09	Tue 11/17/09	22%																																	
21	Conceptual & Major Equipment Specs	10 days	Tue 8/11/09	Thu 8/20/09	100%																																	
22	Site Survey	2 days	Fri 8/21/09	Sat 8/22/09	100%																																	
23	Soil Borings	2 days	Mon 8/31/09	Tue 9/1/09	100%																																	
24	Civil and foundation engineering	10 days	Mon 10/12/09	Wed 10/21/09	0%																																	
25	Issue Foundation for Construction Drawings	2 days	Thu 10/22/09	Fri 10/23/09	0%																																	
26	Detailed Engineering	15 days	Fri 10/23/09	Fri 11/6/09	0%																																	
27	Bulk Material Specs and PO's	20 days	Thu 10/8/09	Tue 10/27/09	0%																																	
28	Issue for Construction Drawings	2 days	Mon 11/16/09	Tue 11/17/09	0%																																	
29	Procurement	60 days	Mon 12/7/09	Thu 2/18/10	0%																																	
30	Buildings	12 wks	Mon 12/7/09	Thu 2/18/10	0%																																	
31	BOP Mechanical	1.55 mons	Mon 1/4/10	Mon 2/15/10	0%																																	
32	BOP Electrical	1.55 mons	Mon 1/4/10	Mon 2/15/10	0%																																	
33	Transportation	20 days	Thu 10/15/09	Tue 11/3/09	0%																																	
34	GTG Package 100	20 days	Thu 10/15/09	Tue 11/3/09	0%																																	
35	GTG Package 200	20 days	Thu 10/15/09	Tue 11/3/09	0%																																	
36	Construction	136 days	Mon 8/24/09	Fri 1/8/10	12%																																	
37	Mobilize to Site	26 days	Mon 8/24/09	Fri 9/18/09	40%																																	
38	Civil Work	54 days	Mon 9/7/09	Fri 10/30/09	34%																																	
39	Site Preparation	10 days	Mon 9/7/09	Sun 9/27/09	100%																																	
40	Excavation & Grading	7 days	Thu 10/15/09	Wed 10/21/09	0%																																	
41	Install Perimeter Fence	12 days	Mon 10/19/09	Fri 10/30/09	0%																																	
42	Power Island Foundations	15 days	Mon 11/16/09	Mon 11/30/09	0%																																	
43	GTG 100	10 days	Mon 11/16/09	Wed 11/25/09	0%																																	
44	GSU 100	5 days	Thu 11/26/09	Mon 11/30/09	0%																																	
45	BOP Foundations	20 days	Sat 12/5/09	Thu 12/24/09	0%																																	
46	Unit Building	10 days	Sat 12/5/09	Mon 12/14/09	0%																																	
47	Substation	10 days	Sat 12/5/09	Mon 12/14/09	0%																																	
48	Substation Bldg	5 days	Tue 12/15/09	Sat 12/19/09	0%																																	
49	Pipe Racks	5 days	Sun 12/20/09	Thu 12/24/09	0%																																	
50	Building Erection & Fit-out	12 days	Tue 12/15/09	Sat 12/26/09	0%																																	
51	Unit Building	7 days	Tue 12/15/09	Mon 12/21/09	0%																																	

Project: EDC / TACOA LM2500 Projec

Date: Thu 10/8/09

Critical

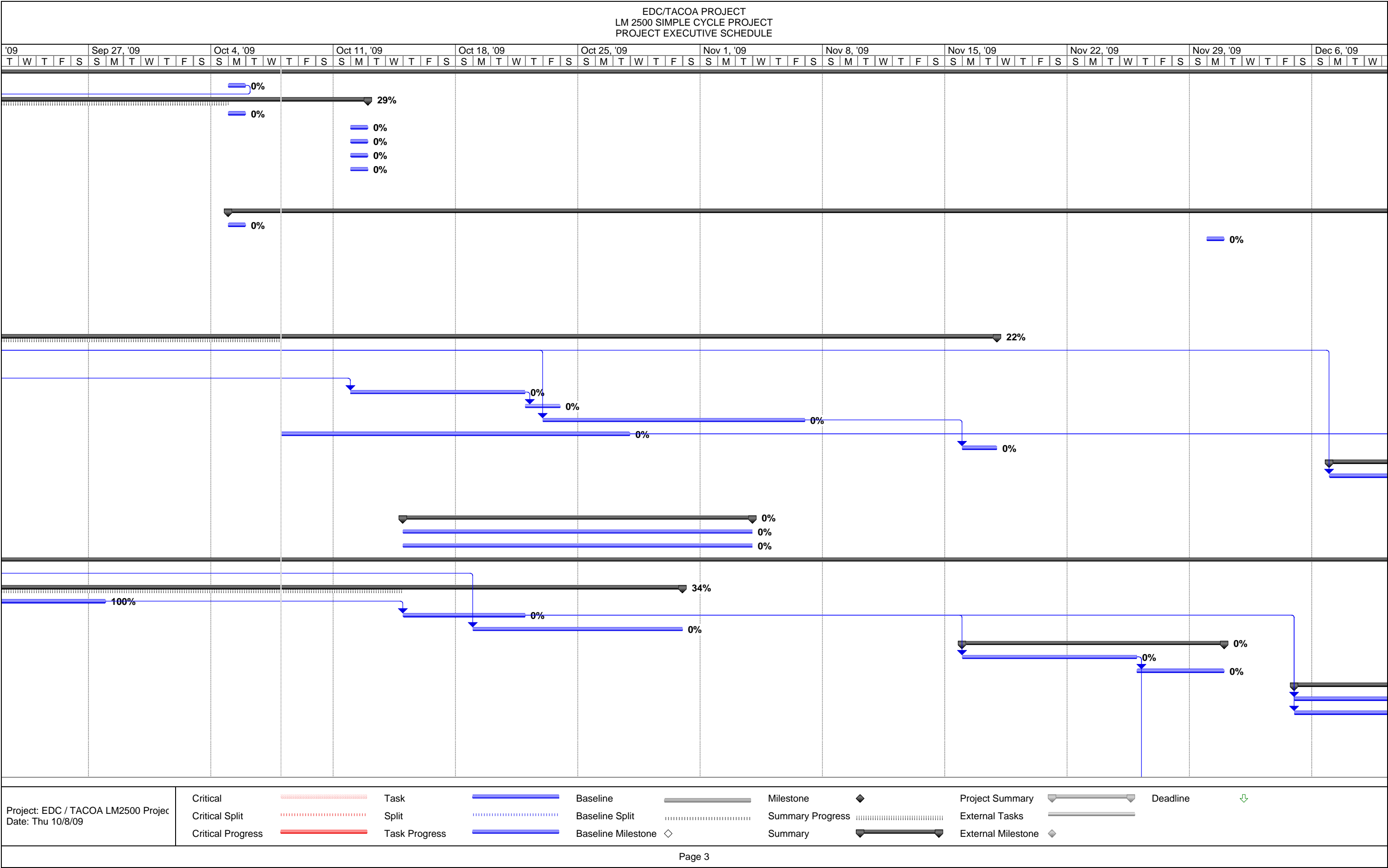
Critical Split

Critical Progress

EDC/TACO PROJECT
LM 2500 SIMPLE CYCLE PROJECT
PROJECT EXECUTIVE SCHEDULE

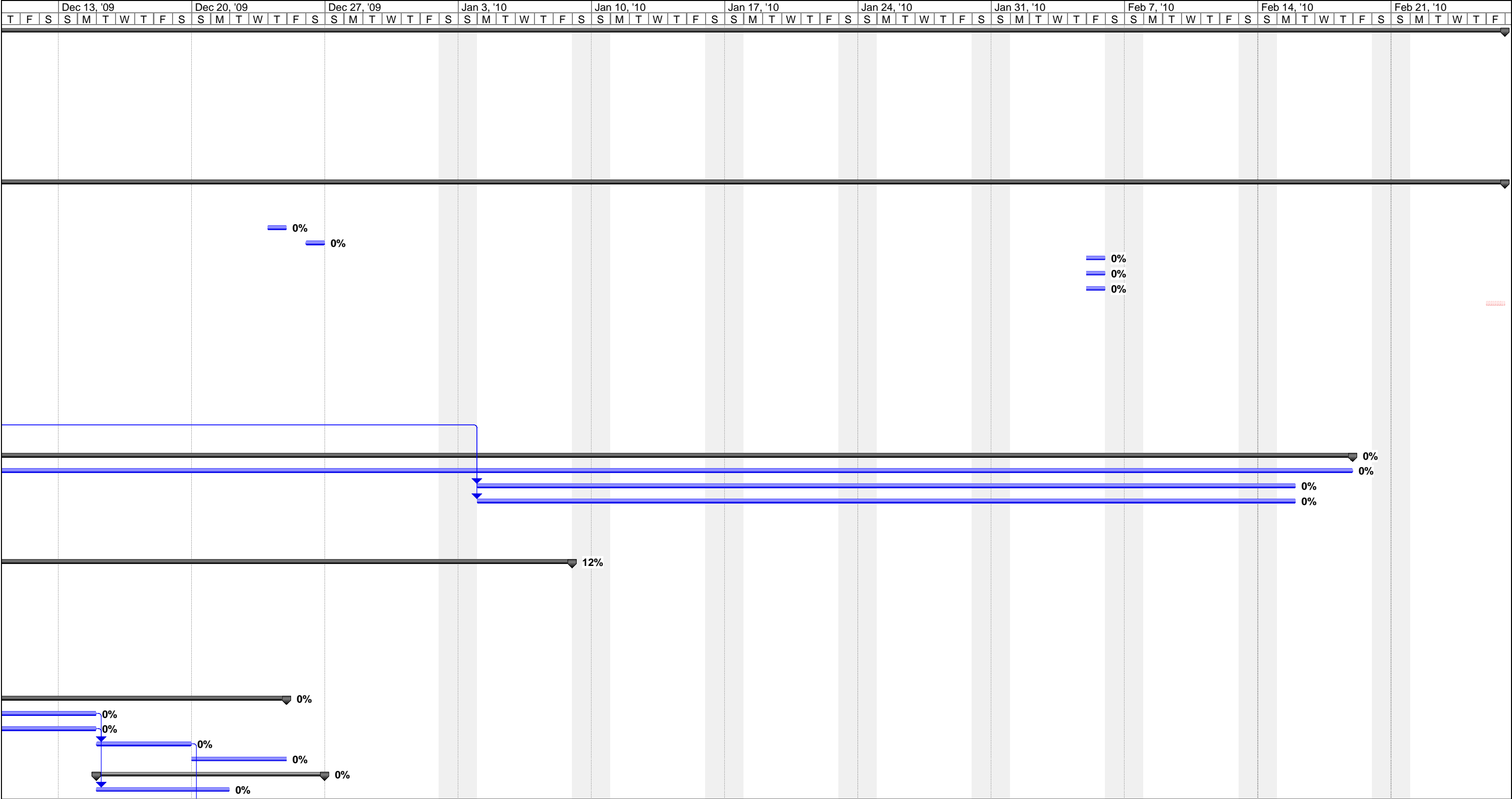
[illegible]

Project: EDC / TACOALM2500 Project Date: Thu 10/8/09	Critical Task Baseline Milestone Project Summary Deadline
	Critical Split Split Baseline Split Summary Progress External Tasks
	Critical Progress Task Progress Baseline Milestone Summary External Milestone



[illegible]

EDC/TACOA PROJECT
LM 2500 SIMPLE CYCLE PROJECT
PROJECT EXECUTIVE SCHEDULE



Project: EDC / TACOA LM2500 Projec
Date: Thu 10/8/09

Critical

Critical Split

Critical Progress

Task

Split

Task Progress

Baseline

Baseline Split

Baseline Milestone

Milestone

Summary Progress

Summary

Project Summary

External Tasks

External Milestone

Deadline

[illegible]